



ARKLE Veterinary Care, LLC

1020 Concord Rd, Smyrna, GA, 30080

Phone: 770-435-6700

Fax: 770-434-4863

Email: arklevetcare@bellsouth.net

Website: www.ArkleVetCare.com

Flea Control in Cats

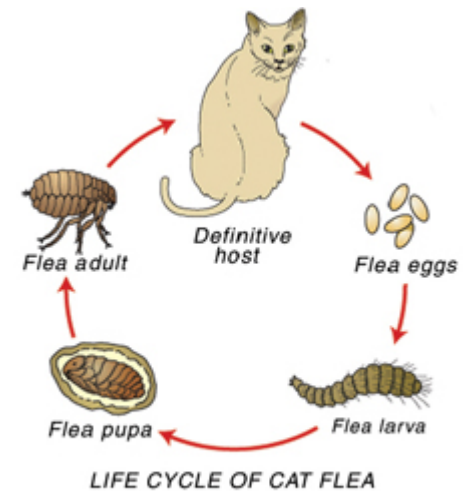
Where did my cat get fleas?

The most common flea found on cats and dogs (as well as opossums and raccoons) is the cat flea (*Ctenocephalides felis*), although any species of fleas, including fleas from rabbits, squirrels or other wildlife, can be found on cats.

"Under ideal conditions, the flea can complete its entire life cycle in as little as two weeks; in adverse conditions, the cycle can take as much as a year."

The most important source of cat fleas is newly emerged adult fleas from flea pupae in your house or yard. Adult fleas live, feed and mate on our pets; the female flea lays eggs that fall off into the environment where they hatch into larvae. The larvae eat organic debris until they mature into pupae. The pupae may lie dormant for weeks to months, awaiting the ideal environmental conditions before hatching into adults. Newly hatched adult fleas jump onto a host animal to complete their life cycle. Two days after eating a blood meal from the host, the female flea begins to lay eggs. Under ideal conditions, the flea can complete its entire life cycle in as little as two weeks; in adverse conditions, the cycle can take as much as a year.

Homes with carpets and central heating provide ideal conditions for the year-round development of fleas. Hardwood floors are not much protection as the various life stages of the flea are protected when they are in the cracks and crevices between boards or near entryways. The highest numbers of flea eggs, larvae and pupae will be found in areas of the house where pets spend the most time, such as their beds and furniture. Even though fleas may be in your house, you probably won't see them. The eggs are tiny white specks the size of dust particles, while the larvae, which are somewhat larger, with dark heads and lighter bodies, migrate deep down in carpets, furniture or cracks in floors away from the light.



Used Under License
Copyright © Lifelearn Inc.

What effect do fleas have on my cat?

Many cats live with fleas but show minimal signs. However, the following problems can occur:

"Flea allergic cats groom or scratch excessively after being bitten by even a single flea."

- Some cats develop an allergy to fleabites, especially if they are repeatedly bitten. Flea allergic cats groom or scratch excessively after being bitten by even a single flea, and often develop skin infections secondary to this self-trauma.

- Adult fleas live on animals and feed on blood. A single adult flea consumes many times its weight in blood over its lifetime. If a kitten, or a debilitated or older cat, has a lot of fleas, the blood loss can be severe, resulting in anemia.
- The flea acts as the intermediate host for one species of tapeworm (*Dipylidium caninum*). This means that the tapeworm is only able to complete its life cycle by infecting both an intermediate host (the flea) and the definitive host (in this case, the cat). Flea larvae become infected by eating tapeworm eggs, and if a cat swallows an infected flea while grooming, the tapeworm larva will develop into an adult tapeworm. Any cat with fleas is likely also to have a tapeworm infestation.
- Many diseases, such as Cat Scratch Fever, Mycoplasma and plague can be contracted by cats via flea bites.

How can I get rid of fleas on my cat?

This can be a challenging task and requires a three-pronged approach. Fleas need to be eliminated from your 1) cat, 2) from any other cats and dogs that you have, 3) from your home and yard. Even this thorough approach may not give 100% control, since you cannot control some sources of fleas such as other people's pets, wild animals or other property outside yours.

What products are available to treat my cat?

Although most topical insecticides will kill adult fleas, many have limited effectiveness because they only work for a few hours after application. This is particularly true of flea shampoos and powders; they kill fleas present on your cat at the time of application but have little residual effect; the following day the cat may again have fleas. Newer products with excellent residual activity are available from your veterinarian. Some products contain adulticide ingredients (kills adult fleas) with residual activity, while others contain *insect growth regulators* (IGR's) that prevent the larval stages from maturing and in effect sterilize the fleas. For best results in a flea infestation, use flea control products that contain an IGR.

ALWAYS READ THE LABEL CAREFULLY – apply any flea control product as instructed and repeat at the intervals stated on the label, and be sure it is the correct strength for the cat being treated.

My cat hates being sprayed. What can I do?

"Some topical flea products are applied monthly and are highly recommended because of their efficacy and ease of application."

Many cats strongly dislike being sprayed. Consult your veterinarian, as there are several alternatives available. Flea collars may seem very convenient but most don't work well (the exception is flea collars that contain an IGR) and are not generally recommended. Flea collars, especially ones with a strong pesticide smell, may be harmful to some cats, or may cause a skin reaction or rash. Flea foams with residual activity can be applied with minimal noise by brushing them into your cat's coat. Some topical flea products are applied monthly and are highly recommended because of their efficacy and ease of application.

At ARKLE Veterinary Care, we recommend all pet cats be treated with Revolution, a prescription medication that is applied once a month topically and is labeled for use against fleas, ear mites, roundworms, hookworms and to prevent heartworms. Your pet will need to be examined by a licensed veterinarian to determine if this is a safe and appropriate medication for your cat.

How can I treat my home environment?

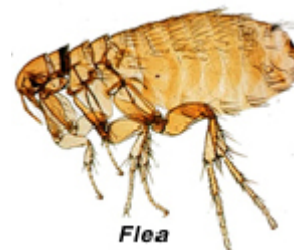
A number of different products are available which will kill the adult and larval stages of fleas and stop the flea life cycle, such as:

- Adulticide sprays for use in the house
- Sprays containing insect growth regulators (IGR's) for use in the house
- Insecticides applied by professional pest control companies
(ARKLE uses and recommends JimPat Pest Control. They may be contacted at 678-445-6866 or 770-550-9606)

Sprays for use in the house should be used in places where the flea eggs, larvae and pupae are likely to be. It is recommended that you treat the entire household first and then concentrate on the hot spots – your cat's favorite napping spots – such as soft furniture, beds and carpets. Once they hatch from the egg, flea larvae move away from the light and burrow deep into carpets and into other nooks and crannies where it is difficult to reach. Be sure to move cushions, furniture and beds to spray underneath them. Other places larvae are likely to live include baseboards and the cracks and crevices between floor seams or boards.

"You will need to throw away the vacuum bag to prevent eggs and larvae from developing inside the vacuum cleaner."

Flea eggs and pupal cases are extremely tough and resistant to the effects of insecticides. To remove these stages, as well as eliminate dead fleas, your pet's bedding should be washed in hot water or replaced. Regular and thorough vacuuming of your carpets, floors and soft furnishings can remove a large number of flea eggs, larvae and pupae. You will need to throw away the vacuum bag to prevent eggs and larvae from developing inside the vacuum cleaner. Vacuuming prior to the application of a spray to the house is recommended because the vibrations will encourage newly developed fleas to emerge from pupae, which will then be killed by the insecticide.



How do I choose which products to use?

A flea control program needs to be individually tailored based on the lifestyle of your cat and other pets, and your family situation. Your veterinarian is the best person to advise you about safe and effective flea control products.

Are insecticides safe for my cat and my family?

Insecticides for flea control should be safe both for pet dogs, cats and humans provided the manufacturer's instructions are carefully followed. One should be particularly careful to avoid combining insecticides with similar modes of action. Always seek your veterinarian's advice if you are unsure about this and always tell your veterinarian about any flea control products you may be using other than those that he has prescribed.

"Certain types of pets (e.g. birds, fish, amphibians, reptiles and invertebrates) may be particularly susceptible to some products."

Certain types of pets (e.g. birds, fish, amphibians, reptiles and invertebrates) may be particularly susceptible to some products. Do not use any flea control products in the room in which these pets are kept without first consulting your veterinarian for advice.

I have not seen any fleas on my cat. Why has my veterinarian advised flea control?

Fleas are easy to find if a cat is heavily infested. If fleas are present in smaller numbers, it can be harder to see them. Fleas move fast! Try looking on the cat's stomach, around the tail base and around the neck. Sometimes adult fleas cannot be found but "flea dirt" can be seen. This is fecal matter from the flea that contains partially digested blood, and it is a good indicator of the presence of fleas. Flea dirt is seen as small black specks or coiled structures; when placed on damp white tissue, it dissolves, leaving a reddish brown stain. Flea dirt may be found in cat's bedding even when fleas cannot be found on the cat.

"Cats are very efficient at removing debris from their coat's using their tongues and may succeed in removing all evidence of flea infestation such as adult fleas and flea dirt."

In cats that develop an allergy to fleas, one of the symptoms is excessive grooming. Cats are very efficient at removing debris from their coat's using their tongues and may succeed in removing all evidence of flea infestation such as adult fleas and flea dirt. One of the most common causes of feline allergic skin disease is flea allergy dermatitis. To eliminate this possibility your veterinarian may advise rigorous flea control even though no fleas can be found. If the cat's skin problem improves with flea control then it suggests that flea allergy is involved.

I noticed my cat had fleas after his return from boarding. Did he get fleas there?

Not necessarily! Pre-adult fleas can survive for up to 140 days within their protective pupa. When you or your pets are absent from home for extended periods of time these adult fleas remain in the pupae because no host is available. As soon as you or your pet returns home, these fleas will emerge in large numbers and jump onto cats, dogs and even people in the search for a blood meal. Vibrations (from walking) and/or increased carbon dioxide (from breathing) will trigger the emergence of fleas from their pupae.

Despite treating my cat for fleas he still has them. Is there a "super flea"?

"Apparent failure of treatment almost always results from improper application of the preventive, inadequate treatment of the home or exposure to other infested pets or environments."

There is no evidence of fleas developing resistant to insecticides, especially the newer once-a-month topical flea preventives that contain a sterilizing agent or IGR in addition to the adulticide. Apparent failure of treatment almost always results from improper application of the preventive, inadequate treatment of the home or exposure to other infested pets or environments. Consider treating storage sheds cars and any outdoor sleeping spots. Bear in mind that your cat may be going into other people's houses. Most of these problems can be overcome by using an effective product with residual activity on the cat in addition to treating your home.

This client information sheet is based on material written by: Ernest Ward, DVM

© Copyright 2009 Lifelearn Inc. Used and/or modified with permission under license.